



*Realizing Engineering Excellence
And Making Great Ideas Green*





INDEX

- Introduction
- Contact Information
- Letter From the Founder
- Our Services
- List of Our Projects
- Our Team





INTRODUCTION

GID is an Engineering firm that was founded in 2010 with the purpose of providing specialized services in “MEP Design & Supervision” in addition to “LEED Certification”. GID is a member of both the Lebanese Green Building Council (LGBC) and the United States Green Building Council (USGBC).

Our Goals

At GID we are committed to working closely with our clients to provide them with satisfactory custom designs and solutions, while assuring coherence and efficiency between engineering systems and trades; or what is called a “Smart Design”.

In addition to design excellence and customer satisfaction we at GID are always striving to sustain the growth of the firm in terms of client base and knowledge acquisition.

Our Experience

Over the years and through hundreds of projects the expertise of the GID team in system-design and supervision of MEP building services has cumulated up to millions of built-up square meters, covering most domains of the industry including airports, hospitals, malls, universities, high-rise residential towers and much more. With this capital of knowledge and experience GID is currently providing its services to all parts of the industry including government, public and private sectors.



OUR VISION

GID's vision for the world is one in which wisdom is manifested in engineering practices, thus bringing awareness to both the engineer and the user and coming closer to perfection.

GID plays its part in this formula by bringing together engineering excellence and energy conservation



**Realizing
Engineering Excellence
And Making
Great Ideas Green**

| | | |
|-----|---|----|
| +5V | 1 | 15 |
| DM | 2 | 16 |
| DP | 3 | 17 |
| GND | 4 | 18 |

LETTER FROM THE FOUNDER



Since its inception in 2010, our firm has strived to provide our clients with premium consultancy services in the domains of "MEP Design", "Green Building Services", and "Sustainability Engineering". In our long and fruitful pursuit to realize these goals, our firm and its team of talented engineers have pushed the limits by employing the latest in engineering codes while benefitting from best-practices. At "Green Innovative Design", we are always looking for optimal system designs, inter-trade coherence with keenness for beauty, function, sustainability and economy.

It is our belief and vision that our firm has and will continue to work towards innovative thinking and introduce sustainable choices in the field of building services engineering. With this vision in mind, we ensure that all of our clients are provided superior customer service and that our engineers are provided with a platform for the exchange of knowledge and experience.

With that being said, I am proud to present you with our portfolio. In it, you will find demonstrations that attest to the depth of our experience and quality of our professionalism.

Lastly I thank you for reading our portfolio and taking interest in our services and we look forward to working together.

Haissam Al Mahmoud
Managing Director & Founder
LEED AP BD+C, CAP, CWEP



OUR SERVICES

Codes & Standards

GID adopts the most up-to-date international standards and codes for all of its services. Some of these codes include: LEED Standards, NFPA, ASHRAE, BS, EN, NPC, IPC , ASTM, CLTD, IEEE, NF.

Program & Software Skills

Some of our team's expertise in programs and software include: Revit, HAP-Carrier, AUTOCAD, Elite, eQuest, DIALUX, ECODIAL, Equipment Selection Software, Microsoft Project and Microsoft Office Suite.



List of Our Services

Please find below a list of our services.

End-to-End Project Backup

- Design Outline
- Sustainability Frame Work
- Design
- Design Audit
- Project Review & Evaluation
- Cost Impact Analysis
- Value Engineering
- Pre-Acquisition Surveys
- Tender Documents
- Re-Calculation Verification
- Site Supervision & Quality Control
- Operation & Maintenance Manual
- Book of Specifications
- Bill of Quantities
- Design Drawings CAD / 2D / 3D / Revit
- Detail Drawings CAD / 2D / 3D / Revit
- Bidding Q&A Correspondence
- Project Work Schedule Audit
- Shop-Drawing CAD / 2D / 3D / Revit
- Coordination Composite Drawings
- Material Submittals Verification
- Shopdrawings Verification
- Commissioning & Handover Procedures
- Condition Surveys & Reports
- MEP Design & Supervision Training

Mechanical Works

- HVAC Design
- District Cooling
- District Heating
- Ground Source Heat Pumps
- Chiller Plants
- Water Tower Chillers
- Evaporative Cooling Systems
- Air Quality Management
- Air Sanitation Systems
- Water Distribution Networks
- Boiler Plants
- Storm Water Networks
- Sewage Treatment Plants
- Water Treatment Plants
- Waste Management
- Ventilation
- Smoke Management
- Firefighting Systems
- Fire Suppression Systems
- Fire Safety
- Generator Rooms
- Industrial Laundry Rooms

- Steam Transmission
- Under Floor Heating & Cooling
- Panel Heating & Cooling
- Plumbing Networks
- LPG Gas systems
- Metering Systems
- Energy Metering Systems
- Fire Alarm Systems
- BMS Systems
- Cooling / Heating Load Calculations
- Extreme Weather Building Service Systems
- Static Pressure Drop Calculation
- Water Demand Calculations
- Domestic Hot Water Storage
- Ice Storage
- Brine Tanks
- Cold Rooms
- Swimming Pools
- Water Features
- Water Falls
- Water Fountains
- Water Mirrors
- Sauna Rooms
- Steam Rooms
- Reverse Osmosis
- Fuel Oil Storage Tanks
- Industrial Food Production Facilities
- Warehouse MEP Infrastructure
- Specialized Storage Rooms
- Chemical Storage
- Sewage Networks
- Drainage Networks
- Irrigation Networks
- Irrigation Control
- Water Softeners
- Cold Rooms
- Industrial Kitchens
- Hospitals
- Clean Rooms
- Isolation Rooms
- Operation Rooms
- Morgue Rooms
- Incubation Rooms
- Laboratories
- Radiology Rooms
- MRI Rooms
- Heat Recovery Systems
- Emergency Rooms
- Fire Suppression
- Fire Fighting
- Car Wash Service Facilities
- Car Refuel Gas Station Facilities

Electrical Works

- CCTV
- Low Current
- Power Production Plants
- Power Distribution Networks
- Power for Mechanical Equipment
- Panel Schedule
- MDB Panels
- E MDB Panels
- ATS Panels
- ADB Panels
- Electrical Riser
- Panel Board
- Low Current
- Fire Alarm
- Public Address
- EIB system
- Data Networks
- LAN / MAN / WiFi
- Telephony PBX
- IP Phone
- Video Phone
- Security Systems
- Alarm System
- Life Safety
- Access Control
- Burglar Alarm
- Emergency Light
- SMATV
- Fiber Optics
- Intercom
- Nurse Call Systems
- Paging Systems
- Lighting Control
- LUX Calculation
- Facade Lighting Design
- Lighting Features
- Road Lighting
- Landscape Lighting
- MCC Panels
- MCP Panels
- Cathodic Protection
- Surge Protection
- Earthing
- Lightning Protection
- Web Access Control
- BMS Networks
- Home Automation
- Pedestrian Conveyor Systems
- Backup Systems
- Energy Billing Systems
- Escalators
- Elevators and Industrial Lifts
- Control Rooms
- Data Centers

Green Building Services

- LEED Energy Simulation & Modeling
- LEED Green Building Certification
- Green Building Design Audits
- Energy Audits
- Energy Reduction Studies
- Renewable Technologies Advice



PROJECT INVOLVEMENT

Project Name

Location

LEED Projects

| | |
|--------------------------------|---------|
| Main Residential Building | Lebanon |
| RB-3729 Residential Building | Lebanon |
| Beirut Marina- Waterfront | Lebanon |
| Makkah Depot | KSA |
| King Abdul Aziz University DLF | KSA |
| LOT 1394-office Building | Lebanon |

Energy Simulation Projects

| | |
|------------------------------|---------|
| JODP-Z3 (Jabal Omar) | KSA |
| MPH- Massaied Printing House | Kuwait |
| Beirut Marina- Waterfront | Lebanon |
| Main Residential Building | Lebanon |
| LOT 1394-office Building | Lebanon |

Industrial

| | |
|-------------------------------|---------|
| Beeseline Factory | Lebanon |
| Car Spray Booth | Lebanon |
| Itani Factory | Lebanon |
| Patchi Factory | Lebanon |
| Patchi Factory 2 | KSA |
| Patchi DIC 2 | UAE |
| Jabal el sheikh Honey Factory | Lebanon |
| Manara Dairy Center | Lebanon |

Hotels

| | |
|-------------------|-------|
| Al wadi Towers | KSA |
| Hayat House Hotel | KSA |
| Radisson hotel | Congo |
| Arjaan Hotel | Iraq |

| Project Name | Location |
|--------------|----------|
|--------------|----------|

Airports

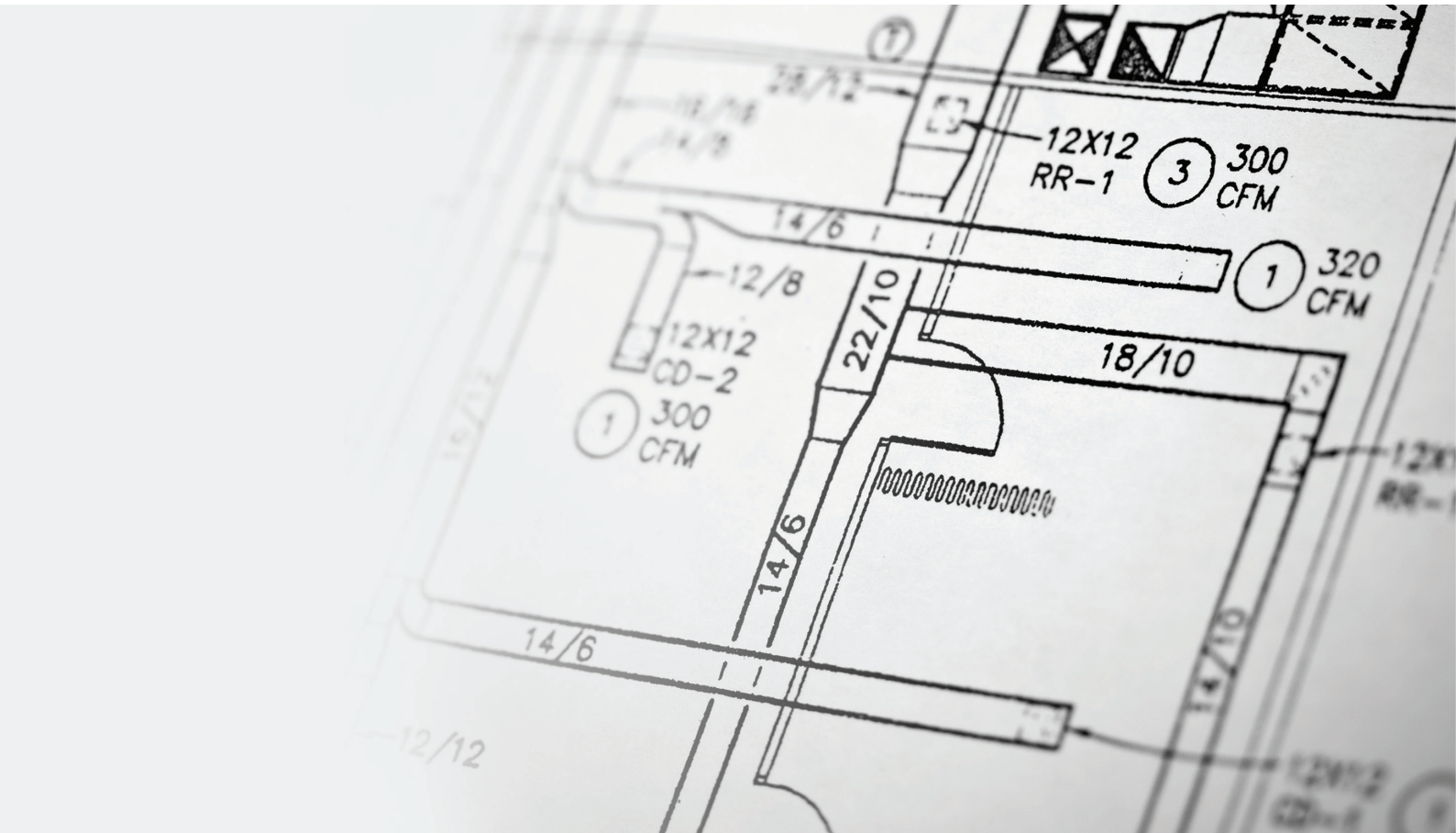
| | |
|--------------------------------|---------|
| Middle East Airlines Workshops | Lebanon |
| Baha Airport | KSA |

Quality Assurance

| | |
|------------------------|-----|
| ABHA Regional Airport | KSA |
| King Abdulaziz Airport | KSA |

Commercial Centers

| | |
|-----------------------------|----------------|
| La Salle | Lebanon |
| Cabinda | Central Africa |
| Dream mall | Lebanon |
| Shops in Salam Mall | KSA |
| Shops In Noor Mall | KSA |
| Le Charcutier Aoun-Zouk 136 | Lebanon |
| Galleria Mall | Congo |
| Green City Residence | Iraq |
| Jawher Dijlah Residence | Iraq |
| Green Residence 2 | Iraq |



Project Name**Location****Schools**

| | |
|----------------------|---------|
| Aabey School | Lebanon |
| Sir El Denie school | Lebanon |
| Quleiat school | Lebanon |
| Tekrit school | Lebanon |
| Burj Barajneh School | Lebanon |
| Bayader School | Lebanon |
| British school | KSA |
| DAR Alaitam School | Lebanon |

Elderly House

| | |
|-------------------------|---------|
| Ain anoub | Lebanon |
| Mamdouha el Sayed Bobst | Lebanon |

Villas

| | |
|----------------|---------|
| BBC | Iraq |
| Teddy Rahmeh | Lebanon |
| Meshref | Lebanon |
| Abuja compound | Nigeria |
| Erbil | Iraq |
| Eyad mashat | KSA |
| Sinno | Lebanon |

Municipalities

| | |
|----------------------|---------|
| Dibbieh municipality | Lebanon |
|----------------------|---------|

Residential

| | |
|------------------|---------|
| Jabri Appt. | Lebanon |
| Main Building | Lebanon |
| Lot # 713 | Lebanon |
| Abdouni Building | Lebanon |
| Viveo | Lebanon |
| Trad Building | Lebanon |
| Courtyard | Lebanon |

| Project Name | Location |
|------------------------|----------|
| SAM Tower | Lebanon |
| Fakhouri Tower | Lebanon |
| Jamil Mekkawi Building | Lebanon |
| Sea View | Lebanon |
| Arabian Towers | Lebanon |
| Offices | |
| Novus | Lebanon |
| Beesline offices | Lebanon |
| Baeshen offices | KSA |
| Colortek head office | Lebanon |
| Taghziah offices | Lebanon |



Mosques

| | |
|-----------------|---------|
| Al Zahra Mosque | KSA |
| Trad mosque | Lebanon |

Cold Rooms

| | |
|----------------------------|---------|
| 2 Cold Rooms For Pistachio | Lebanon |
| Cold Store for Apple_ehmej | Lebanon |
| Cold Room for dates | Lebanon |

Clubs

| | |
|-------------------|--------|
| Stable Club House | KSA |
| Ras El Ardh Club | Kuwait |
| AL Qalzam Club | KSA |

Hospitals

| | |
|---|-------------|
| Rafic Hariri University Governmental Hospital | Lebanon |
| ESH Hospital | Iraq |
| Sahel general Hospital | Lebanon |
| Rahma Medical Center | Lebanon |
| Dammam Trauma center | KSA |
| Juba Hospital | South Sudan |

Universities

| | |
|----------------------------------|-----|
| KAU-Deanship of Distant Learning | KSA |
| King Saud university-SETC | KSA |

Restaurants

| | |
|-------------------|---------|
| Burj al Hamam | KSA |
| Batchig Resto | Lebanon |
| Mayrig Restaurant | Lebanon |
| NAYA restaurant | KSA |



OUR TEAM

HAISSAM AL MAHMOUD

Managing Director & Founder

With a passion for innovation, green solutions and engineering, Haissam Al Mahmoud founded GID in 2010 and became one of the few pioneers of green building designs in the region. Since then, these passions have been complemented by years of experience and a team of engineering experts. Mr. Al Mahmoud specializes in “Green Building”, MEP, and “Sustainability Engineering” and has a long track-record of successful projects.

Education: Mechanical Engineering Diploma (Lebanese University)

Affiliations:

- LEED Accredited Professional (BD+C)
- CAP Carbon Auditing Professional
- CWEP Certified Water Efficiency Professional
- Member of American Society of Heating Refrigeration and Air-Conditioning Engineers (ASHRAE)
- Member of the Association of Energy Engineers (AEE)
- Member of the Lebanese Green Building Council (LGBC)
- Member of the Lebanese Syndicate of Engineers and Architects (OAE)
- Court-Appointed Expert Engineer of the Lebanese Judicial System

IMAD KAWWAS

Head Electrical Engineer & Associate

A long-time veteran engineer, with decades of experience in design and contracting of electrical systems, Mr. Kawwas currently serves as GID's Head Electrical Engineer and one of the firm's co-founders and Associate.

Education: Bachelors in Electrical Engineering (BAU)

Affiliations:

- Member of the Lebanese Green Building Council (LGBC)
- Member of the Lebanese Syndicate of Engineers and Architects (OAE)

SALAH ADADA

Executive Consultant

With ten years of experience under his wing Mr. Adada plays an important role in the development and growth of GID. He functions primarily as our executive consultant and is also the senior projects site engineer. Other specialties include project planning, project technical backup, and project management.

Education: Bachelors in Mechanical Engineering (BAU)

Affiliations: Member of the Lebanese Syndicate of Engineers and Architects (OAE)

AHMAD HIDEK

Electric Designer

Ahmad, with more than ten years of experience of design and shopdrawing production, has worked on all kind of projects such as residential buildings, hotels, towers and street lighting projects and much more.

Education: Technical designer in Electrical systems.

MAHMOUD KIBLAWI

Senior Mechanical Engineer

Our experienced Mr. Kiblawi currently heads our design department. Mahmoud is a Senior Mechanical Engineer with a Masters Degree in Engineering and hundreds of projects under his belt. He specializes in a wide range of MEP engineering projects.

Education: Masters in Mechanical Engineering (RHU)

Affiliations:

- Member of the Lebanese Green Building Council (LGBC)
- Member of the Lebanese Syndicate of Engineers and Architects (OAE)

AHMAD KHAIWI

Mechanical Designer

Ahmad is one of our young and passionate engineers. He currently serves a GID junior design engineer. During his time at our firm, he has worked on tens of MEP projects.

Education: Bachelors in Mechanical Engineering (BAU)

Affiliations: Member of the Lebanese Syndicate of Engineers and Architects (OAE)

OUSSAMA AL MAHMOUD

Mechanical Designer

Oussama is one of our passionate engineers. He currently serves a GID design engineer. During his time at our firm, he has worked on large variety of MEP projects.

Education: Bachelors in Mechanical Engineering (UDM)

MUHAMMAD ZEIN

Mechanical Designer

Muhammad Zein is a sharp, determined and young Mechanical Designer. During his time at our firm, Mr. Zein has demonstrated agility and the ability to go beyond all expectations. He has obtained his Bachelors of Science in Industrial Engineering and Maintenance from the Institute University of Technology at the Lebanese University.

Education: BS in Industrial Engineering and Maintenance (UL)

Affiliations: Member of the Lebanese Green Building Council (LGBC)

MARIAM KARAMAN

Senior Electrical Engineer

Experienced electrical designer in design of electrical systems with more than 30 years of practicing in different type of projects.

Education: Bachelors in Electrical Engineering (BAU)

Affiliations: Member of the Lebanese Syndicate of Engineers and Architects (OAE)

MOHAMAD NASSER

Senior Electrical Engineer

A professional electrical engineer, with decades of experience in design of electrical systems.

Education: Bachelors in Electrical Engineering (BAU)

Affiliations: Member of the Lebanese Syndicate of Engineers and Architects (OAE)

Jad Jarudi

Lead Engineer

One of the lead engineers on the design of some of the largest infrastructure –wet utilities-projects in the Middle East.

Education: Bachelors in in Civil & Environmental Engineering (LAU)

Affiliations: Member of the Lebanese Syndicate of Engineers and Architects (OAE)

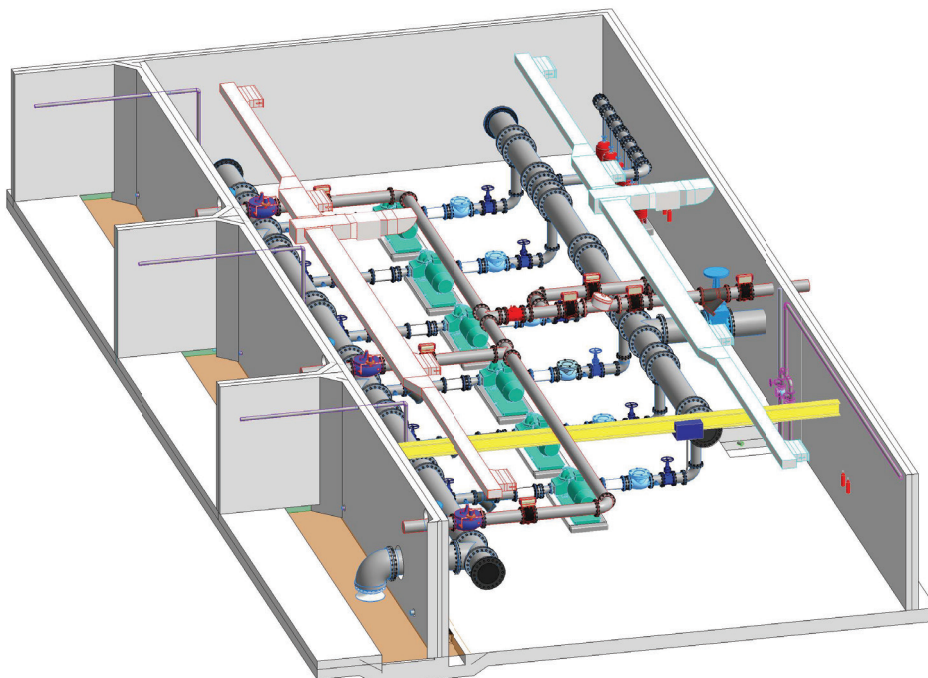
Khaled Mahmoud

Electrical Engineer


A professional electrical engineer, with wide experience in the design of some of the largest infrastructure –dry utilities-projects in the Middle East.


Education: Bachelors in Electrical Engineering (LAU)


Affiliations: Member of the Lebanese Syndicate of Engineers and Architects (OAE)



CONTACT INFORMATION

 Corniche El-Mazraa, Beirut, Lebanon

 +961 3 83 07 07

 Türkiye, Istanbul, Silivri, Yeni Mahalle

 +90 546 403 71 12

 www.gidconsultants.com

 info@gidconsultants.com

